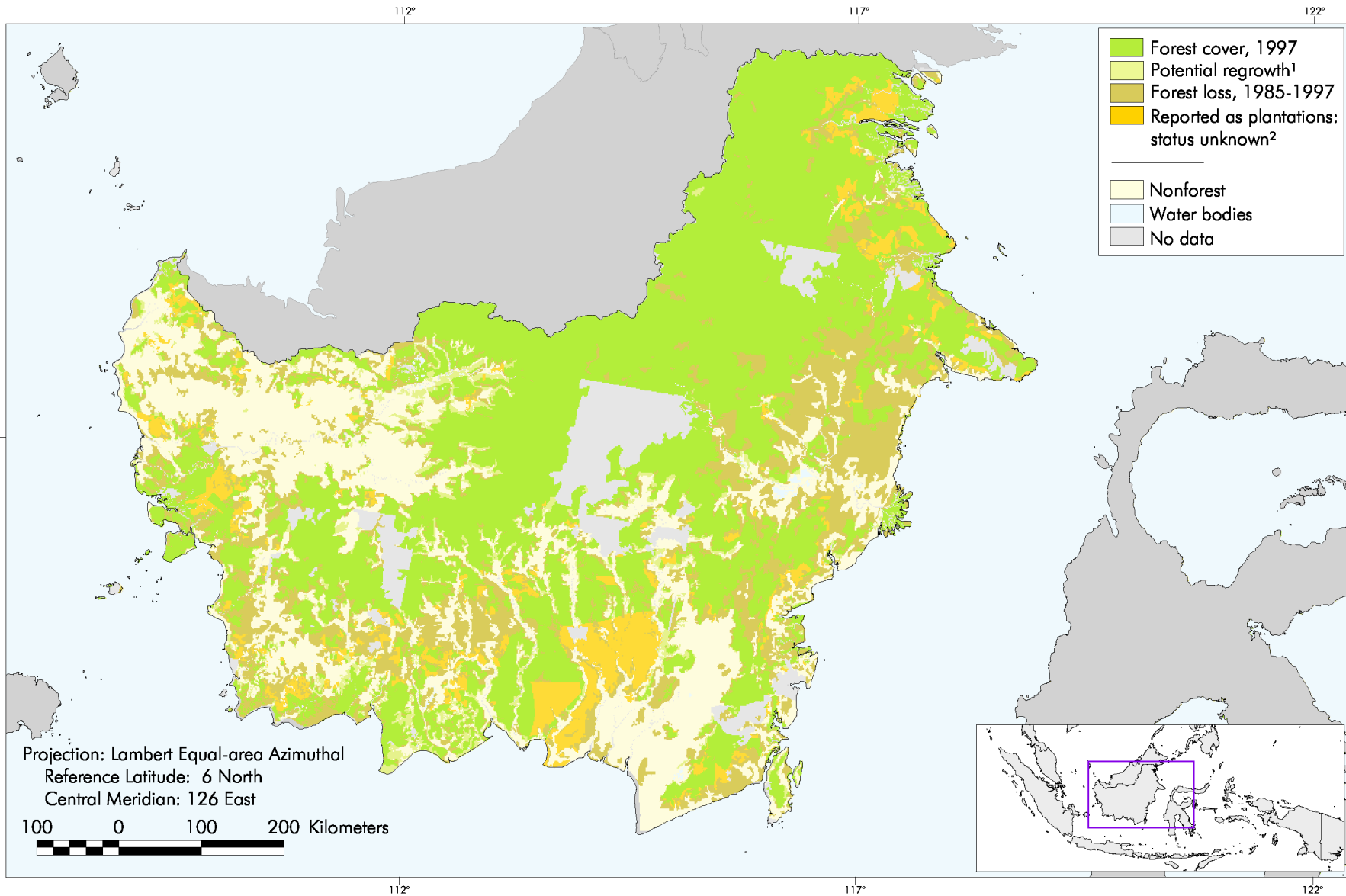


MAP 2 Natural Forest Cover Change in Kalimantan, 1985-1997



Sources:

Forest cover for 1997: GOI/World Bank, 2000. Forest cover for 1985: UNEP-WCMC, 2000 based on RePPPProT data. Estate crops and plantations: GOI/FAO, 1996. Boundaries: ESRI Digital Chart of the World (DCW), 1993 and FWI, 2001.

Notes:

¹ Potential regrowth areas are classified as forest in GOI/World Bank 2000 but not in UNEP-WCMC, 1996. In some cases, it appears that these areas are an artifact of the overlay process.

² These are areas identified as forest in GOI/World Bank, 2000 and as estate crops or plantations in GOI/FAO, 1996.

