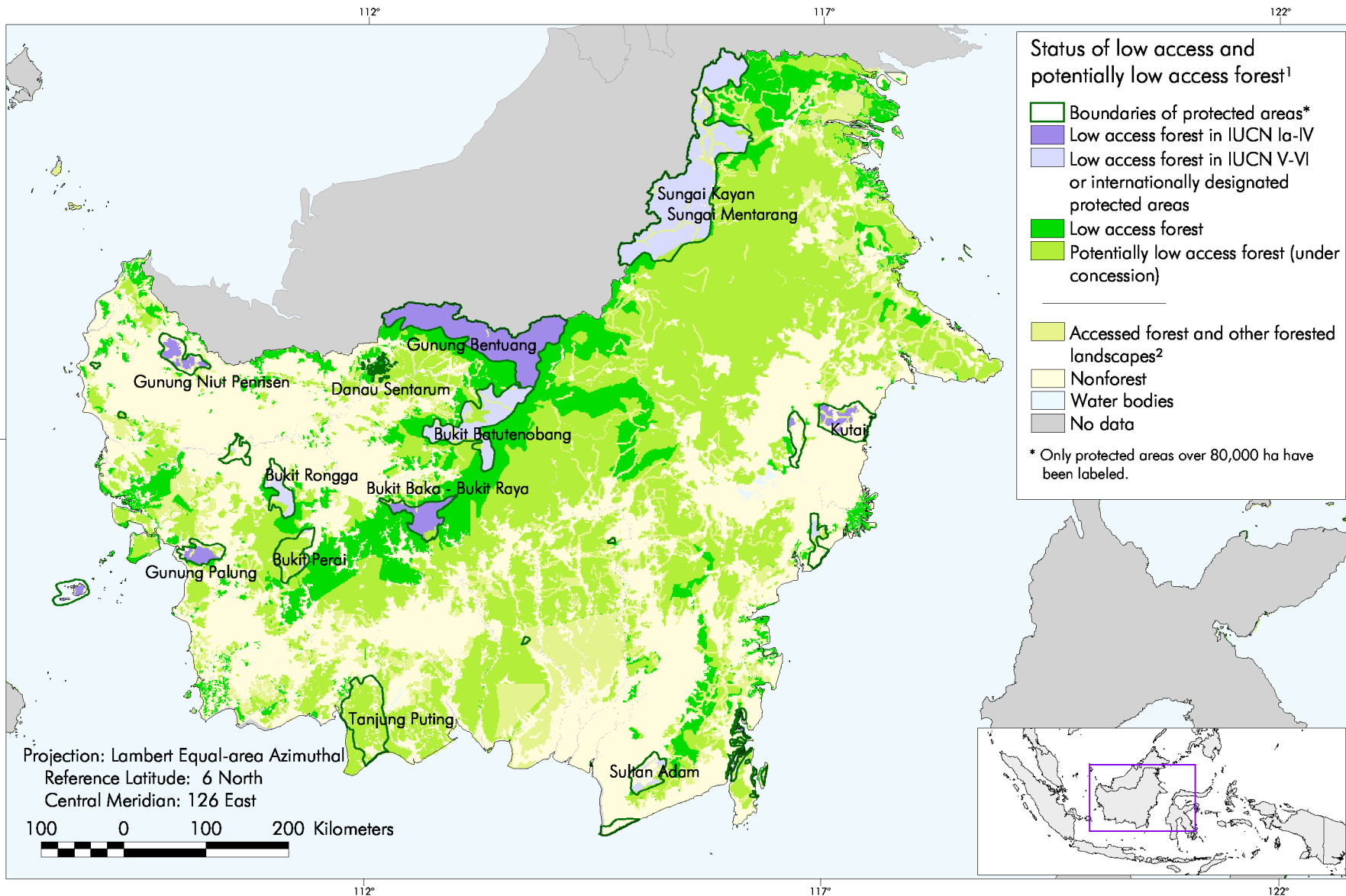


# MAP 7 Extent and Distribution of Protected Areas, Kalimantan



Sources:  
 Base forest cover: GOI/World Bank, 2000 modified with GOI/FAO, 1996. Protected area boundaries: UNEP-WCMC, 2000. Forest concessions: GOI/FAO, 1996. Boundaries: ESRI Digital Chart of the World, 1993 and FWI, 2001.

## Notes:

<sup>1</sup> Low access forests are presumed natural forests; however, the dataset does not identify forests that have been degraded by fires or other human activities.

<sup>2</sup> Includes areas of forest reported as plantations (see Map 1) and accessed forests within 1km of roads or navigable waterways.

