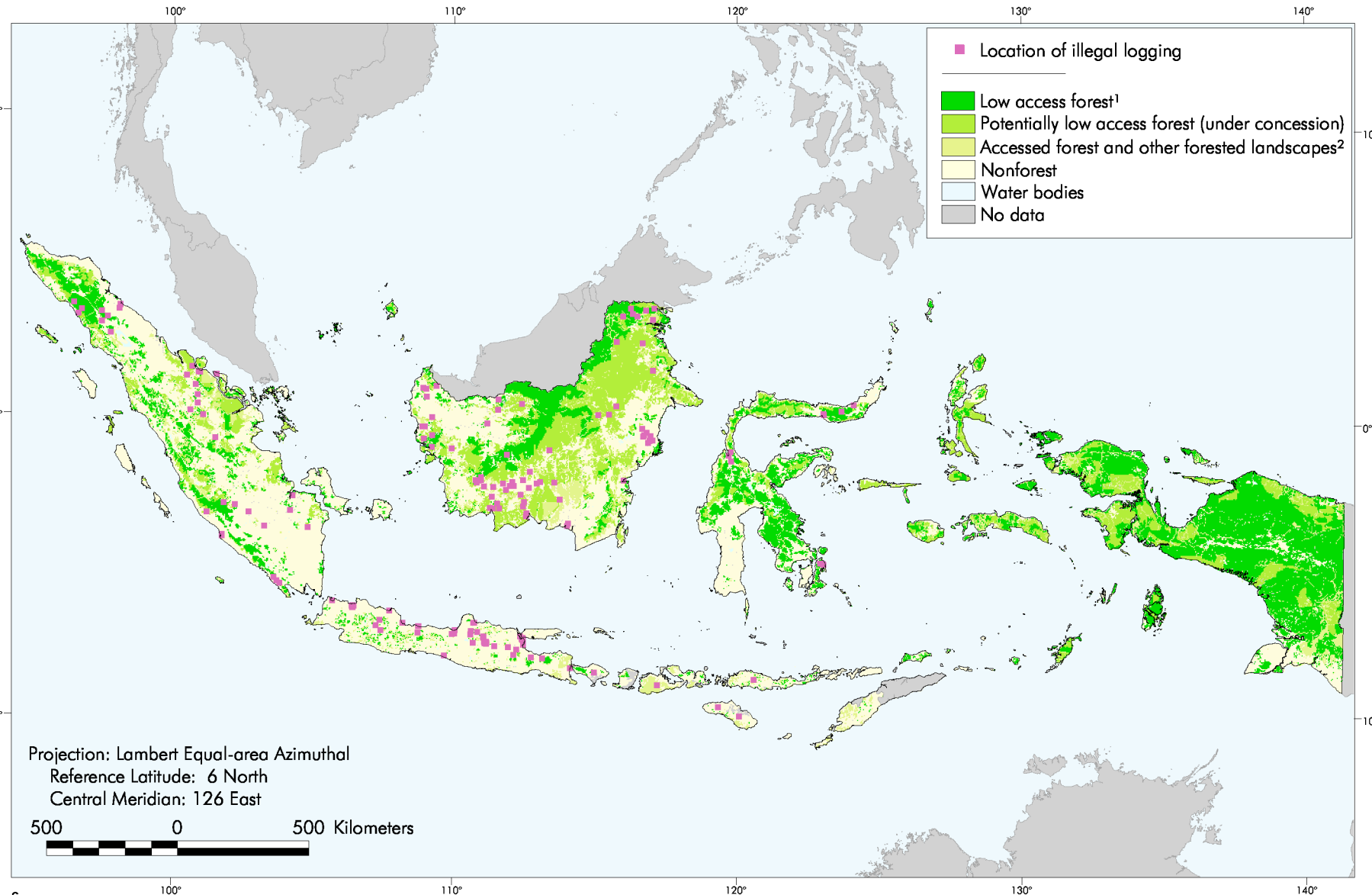


# MAP 9 Limited Data Survey of Reported Cases of Illegal Logging, 1997-1998



## Sources:

Base forest cover: GOI/World Bank, 2000 modified with GOI/FAO, 1996. Forest concessions: GOI/FAO, 1996. Illegal logging: FWI compilation of information from Indonesian newspapers between 1997 and 1998. Boundaries: ESRI Digital Chart of the World, 1993 and FWI, 2001.

## Notes:

<sup>1</sup> Low access forests are presumed natural forests; however, the dataset does not identify forests that have been degraded by fires or other human activities.

<sup>2</sup> Includes areas of forest reported as plantations (see Map 1) and accessed forests within 1 km of roads or navigable waterways.

